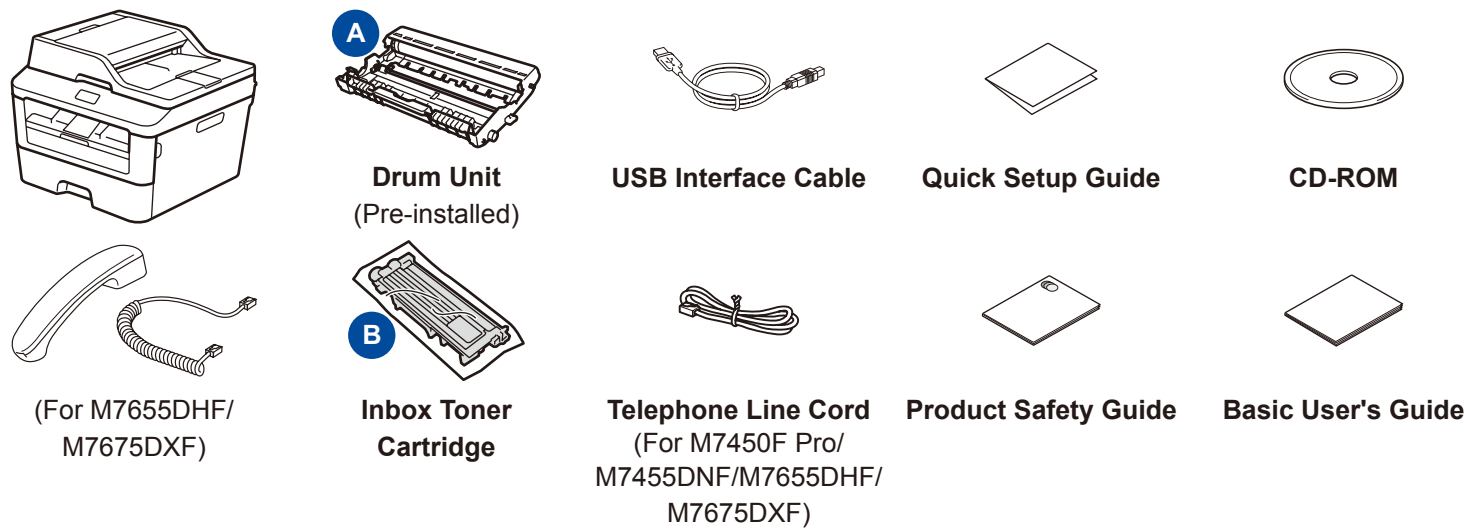


Unpack the machine and check the components



Read the Product Safety Guide first, then read this Quick Setup Guide for the correct installation procedure.

NOTE:

- The available connection interfaces vary depending on the model.
- The illustrations in this Quick Setup Guide are based on the M7455DNF and M7675DXF.

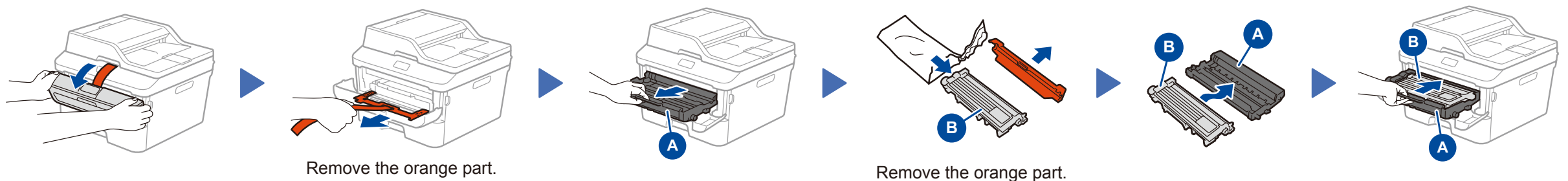
USB cable

We recommend using a USB 2.0 cable (Type A/B) that is no more than 2 meters long.

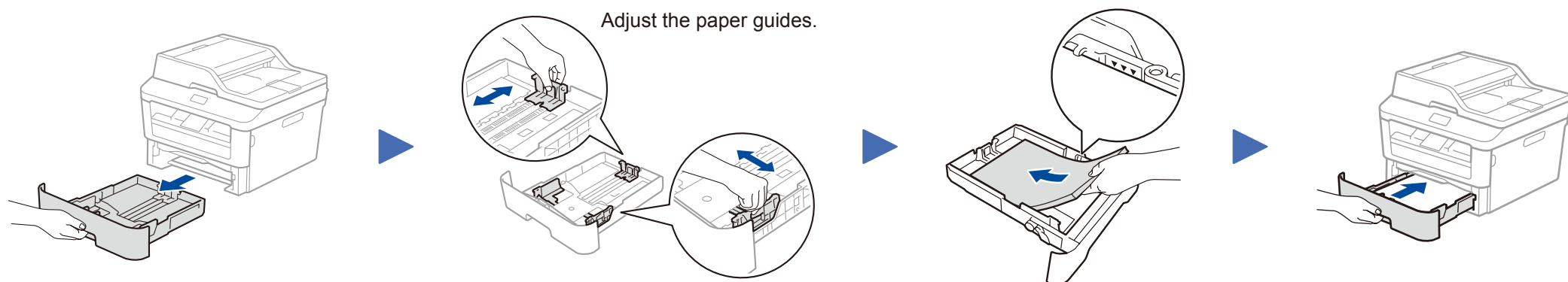
Network cable

Use a straight-through Category 5 (or greater) twisted-pair cable for 10BASE-T or 100BASE-TX Fast Ethernet Network.

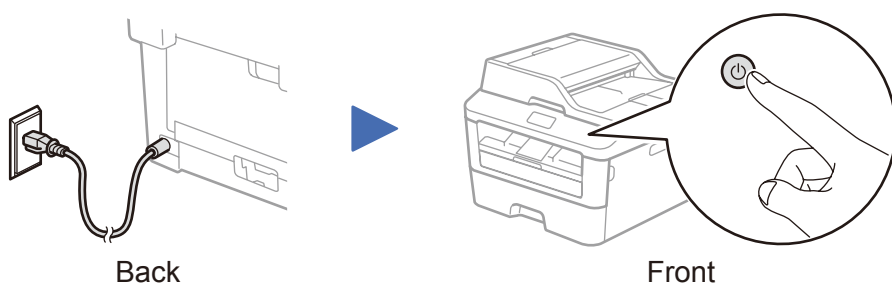
1 Remove the packing materials and install the toner cartridge



2 Load paper in the paper tray



3 Connect the power cord and turn on the machine



4 Select your language (if needed)

- (M7400 Pro, M7405D, M7605D and M7615DNA)
 - Press **Menu**.
 - Press **▲** or **▼** to display 常规设置 (General Setup), and then press **OK**.
 - Press **▲** or **▼** to display 语言 (Local Language), and then press **OK**.
(M7450F Pro, M7455DNF, M7655DHF and M7675DXF) Press **Menu, 0, 0**.
- Press **▲** or **▼** to select your language, and then press **OK**.
- Press **Stop/Exit**.

5 Configure the machine for faxing (for M7450F Pro / M7455DNF / M7655DHF / M7675DXF)

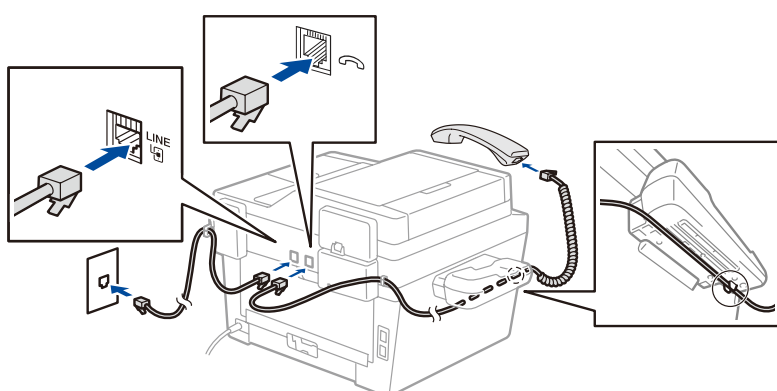
If you do not plan to use the fax feature on this machine, go to step 6.

NOTE:

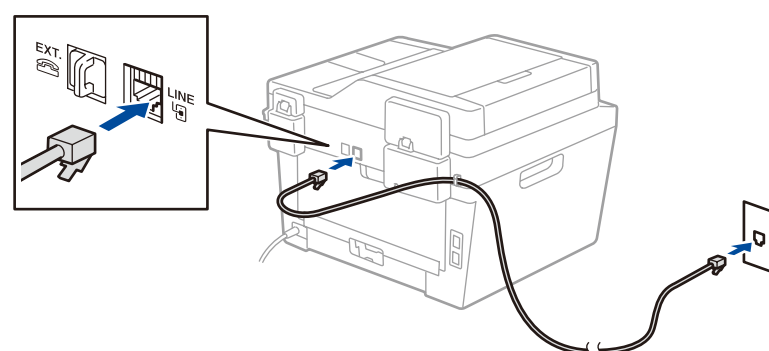
- To complete fax setup on your machine, see the *Basic User's Guide*.
- Your machine is programmed to automatically receive faxes. To change this default mode, see the *Basic User's Guide*.

A. Connect the telephone line cord

(For M7655DHF and M7675DXF)



(For M7450F Pro and M7455DNF)



B. Set the date and time

Date

- (For M7455DNF and M7675DXF)
Press **Menu, 0, 1, 1**.
(For M7450F Pro and M7655DHF)
Press **Menu, 0, 1**.
- Enter the last two digits for the year on the dial pad, and then press **OK**.
- Enter the two digits for the month on the dial pad, and then press **OK**.
- Enter the two digits for the day on the dial pad, and then press **OK**.

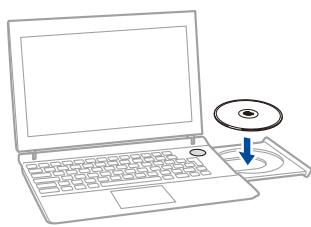
Time

- Enter the time using the dial pad, and then press **OK**.
- Press **Stop/Exit**.

6 Connect the machine to your computer/mobile device

- Windows® PC with a CD-ROM drive, go to step **6A**
- Windows® PC without a CD-ROM drive, go to step **6B**
- Macintosh, go to step **6B**

6A Configuration using the CD-ROM (Windows®)



NOTE:
If the Lenovo screen does not appear automatically, go to **Computer (My Computer)**. (For Windows® 8: click the **File Explorer** icon on the taskbar, and then go to **Computer**.) Double-click the CD-ROM icon, and then double-click **start.exe**.



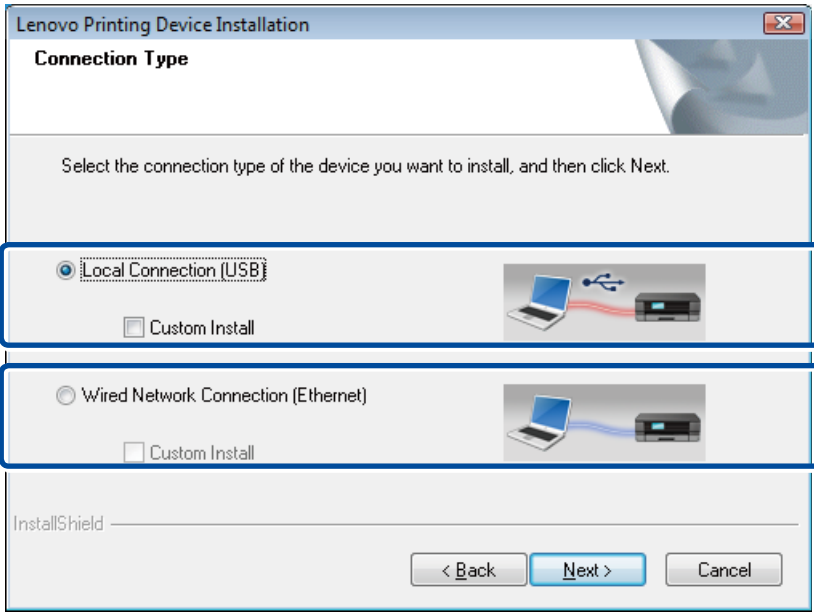
Follow the on-screen instructions to continue installation until either the **Connect the machine** or the **Connection Type** screen appears.

- **Connect the machine:** Follow the on-screen instructions to continue installation.

Finish

- **Connection Type:**

Connection Type



For USB Connection

For Wired Network Connection
Connect a network cable first.

Follow the on-screen instructions to continue installation.

Finish

NOTE:
If connection is unsuccessful, repeat this step.

6B Configuration without using the CD-ROM (Windows® without CD-ROM drive or Macintosh)

You can download the latest device driver for free from the Lenovo Support Website, enabling you to use your Lenovo machine as a printer. Visit us at <http://www.lenovo.com/>.

After you download the driver and software package, follow the on-screen instructions until either the **Connect the machine** or the **Connection Type** screen appears. Refer to **6A Configuration using the CD-ROM (Windows®)**.